



Lohmann & Rauscher

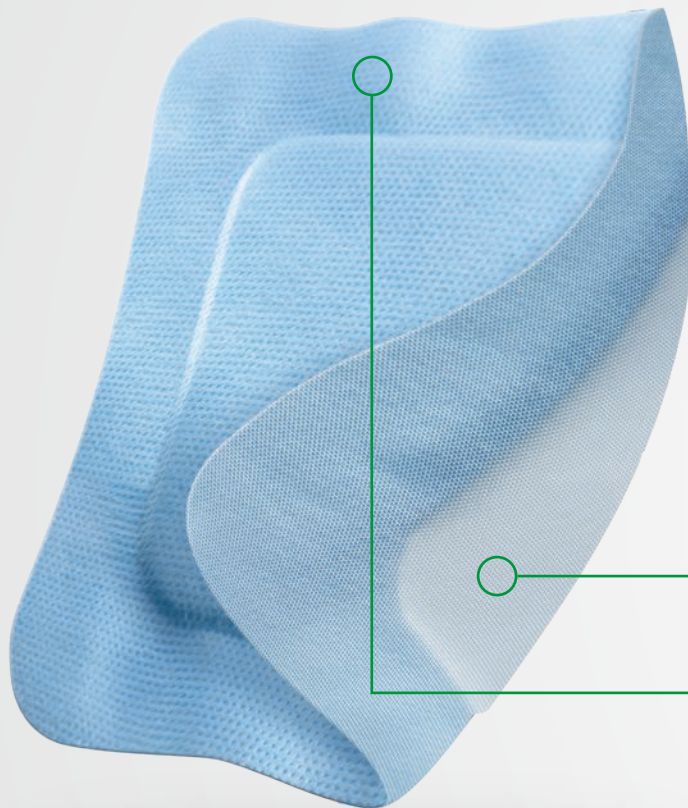
Vliwasorb[®] Pro

Superabsorbent dressing
for highly exuding wounds.



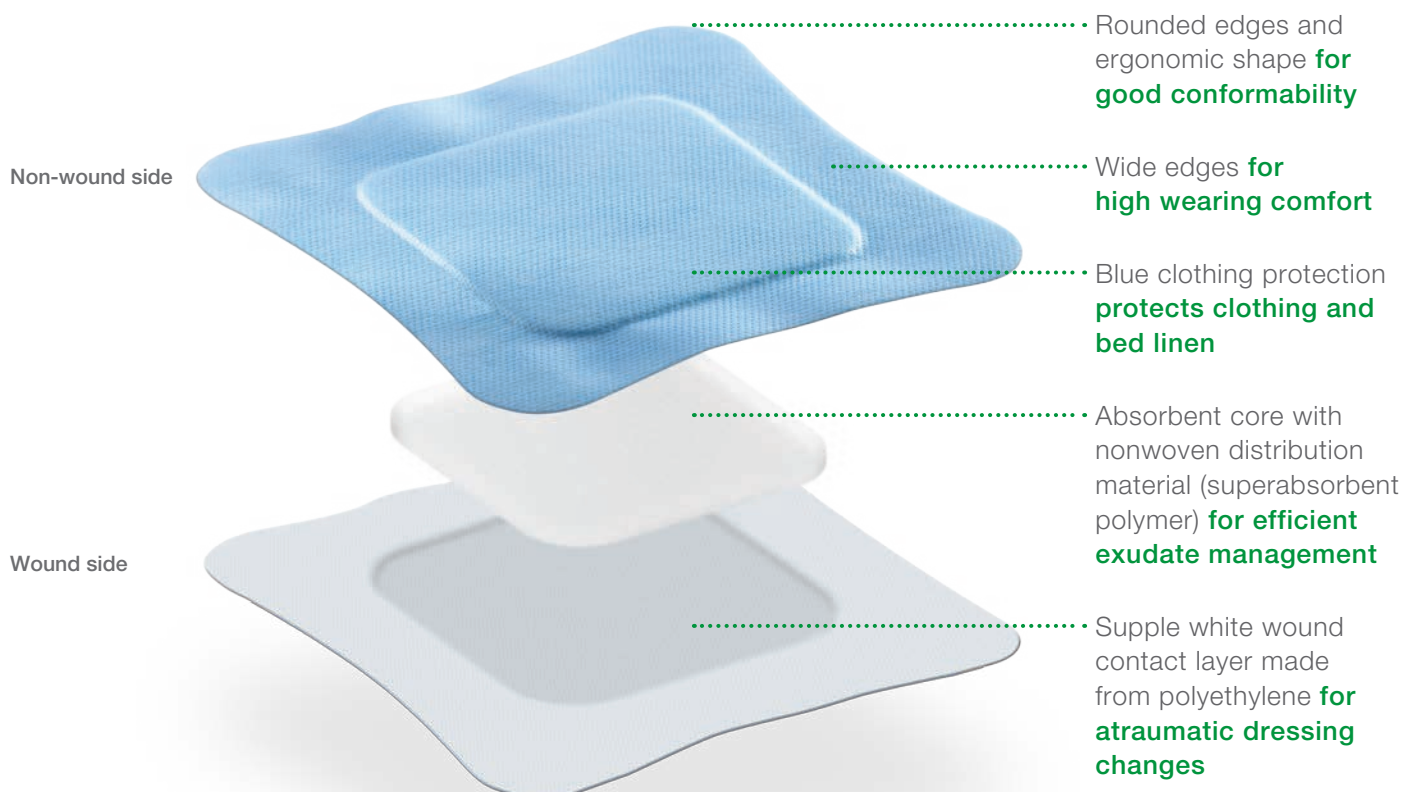
Vliwasorb® Pro

The advantages at a glance.



Supple wound contact layer

Blue clothing protection layer

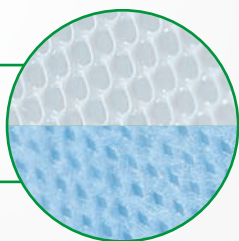


New superabsorbent polymer structure with very high absorption capacity



Comfort and flexibility for the patient

- high conformability due to the ergonomic and flexible design⁴
 - ◆ easy and safe to use⁴

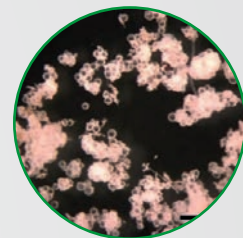


Protection and safety for patients and users

- blue clothing protection and supple wound contact layer
 - ◆ atraumatic dressing changes^{1,2}
 - ◆ protects the patient's clothing and bed linen²
 - ◆ patients can wear the dressing for longer¹

Efficient exudate management

- very high absorption capacity and high retention capacity
 - ◆ protection against maceration¹
 - ◆ moist wound environment²
 - ◆ longer dressing change intervals save time and money³
- reduces proteases (e.g. MMPs, elastase)*
- reduces odour development during the treatment^{1,2}
- effective under compression - a combined approach can be taken to optimise healing potential



* Based on in-vitro studies⁵

What indications is Vliwasorb® Pro suitable for?



Wounds with moderate to very high levels of exudate



Superficial wounds



Chronic wounds

e.g. lower leg ulcers, pressure ulcers, diabetic ulcers and oncological wounds



Acute wounds

e.g. superficial second degree burns, postoperative wounds healing by secondary intention, traumatic wounds, skin graft donor sites

Vliwasorb® Pro can be used as a secondary dressing in combination with a suitable wound filler (e.g. Suprasorb® A, Suprasorb® Liquacel) to treat deep wounds. The dressing must be secured with a suitable secondary dressing (retention dressing, e.g. Curafix® H, elastic conforming bandage, e.g. Mollelast®/Mollelast® haft).

Ordering information




Vliwasorb® Pro

sterile, individually sealed

Size (cm)	Wound pad (cm)	REF	Shipping Unit (pcs.)
10 x 10	6 x 6	32 640	10/300
12.5 x 12.5	8.5 x 8.5	32 641	10/300
12.5 x 22.5	8.5 x 18.5	32 642	10/350
22 x 22	18 x 18	32 643	10/260
22 x 32	18 x 28	32 644	10/90

Please follow the instructions for use.

Note: Please check the size of the wound pad before placing your order.

-  Very high absorption and retention
-  Comfort and flexibility for the patient
-  Protection and safety for patients and users



Sources:

- 1 de Lange S. User test report: a comfortable superabsorbent dressing for management of patients with moderate-to-highly exuding wounds. 2018b. (data on file) Results published: Georgiadis Efsthathios, MD, Münter KC, MD, Eberlein Thomas, MD, Andriessen Anneke, de Lange Stefanie, Abel Martin, A Comfortable Superabsorbent Dressing for Management of Patients with Moderate-to-highly Exuding Wounds, E-Poster ID – Nr.: 227 WOUNDS UK Congress 13 – 15 November 2017, Harrogate, UK.
- 2 de Lange S. Clinical study report: case series using a polyacrylate superabsorbent dressing in the management of moderate-to-copious exuding wounds – study report 2018a (data on file). Results published: Wolber Silke, Scheuenstuhl Yvonne, de Lange Stefanie, Abel Martin, Case series demonstrating the performance and safety of a novel superabsorbing dressing* in high exuding chronic wounds –first results, Journées Cicatrisation, Paris, 15-17 January 2017.
- 3 Seidler-Jankowsky R. Report FE-S - 0268/2015. 2015. (data on file)
- 4 de Lange S. Vliwasorb Pro acceptance test. 2015. (data on file)
- 5 Hipler UC. Study report: 17-070 - in vitro evaluation of the binding capacity of Vliwasorb® and Vliwasorb® Pro for the inflammatory proteases PMN elastase and MMP-2. 2017 (data on file)

For any queries please contact your local Lohmann & Rauscher (L&R)

Sales Representative or L&R Customer Service on:

Australia: 1300 572 869

New Zealand: 0800 572 869

Curafix®, Moll elast®, Suprasorb® and Vliwasorb® are registered trademarks of Lohmann & Rauscher GmbH & Co. KG. © 2018

Lohmann & Rauscher Pty Ltd · 321 Ferntree Gully Road · Mount Waverley, Victoria 3149 · Australia
Lohmann & Rauscher Limited · 21 Queen Street · Auckland 1010 · New Zealand