

Nutrini Energy Multi Fibre

A ready-to-use, nutritionally complete, high energy, fibre enriched, enteral tube feed for children 1-6 years (or 8-20kg)

Features

- Whey protein enriched for improved tolerance and protein balance
- Higher proportion of fat, lower protein and iron content compared to adult formulations to cater for the needs of young children
- DHA* and EPA** enriched, blend of long chain fatty acids to support brain function and prevent deficiency
- Fibre enriched, MF6 fibre blend***, 4g per pack (500ml), to help maintain normal bowel function
- Enriched with carotenoids reflecting general health recommendations for its antioxidant properties and positive effect on immune function

Indications

For the dietary management of:

- Disease related malnutrition in children 1-6 years (or 8-20kg)
- Growth failure
- Children with constipation or diarrhoea

Important Notice

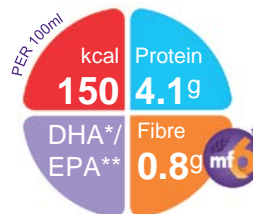
- Not suitable for patients with galactosaemia
- Not suitable for infants under 1 year of age
- Use with caution in children aged 7 years and older
- Not suitable for children with a seafood allergy
- Not suitable for children requiring a fibre free diet
- Not for parenteral use

Directions for Use

- Use at room temperature
- Shake well before use
- Handle aseptically to ensure product remains sterile
- Usage to be determined by a healthcare professional

Storage

- Store in a cool, dry place
- Once opened, store in the refrigerator
- Discard unused content after 24 hours



Ordering Information

- To order contact Nutricia Customer Care 1800 889 480

Nutrini Energy Multifibre	Code	Units per carton
200ml plastic bottle	83934	24
500ml pack	40786	8

Ingredients

Nutrini Energy Multi Fibre: Water, maltodextrin, vegetable oils (canola oil, sunflower oil), sodium caseinate (from **milk**), whey protein concentrate (from **milk**), dietary fibres (**soy** polysaccharides, resistant starch, inulin, arabic gum, cellulose, oligofructose), emulsifier (**soy** lecithin), **fish** oil, tri calcium phosphate, potassium chloride, acidity regulator (citric acid), sodium chloride, di potassium hydrogen phosphate, tri potassium citrate, choline chloride, carotenoids (contains **soy**) (β -carotene, lutein, lycopene), sodium L-ascorbate, magnesium hydroxide, calcium hydroxide, taurine, potassium hydroxide, ferrous lactate, zinc sulphate, L-carnitine, nicotinamide, DL- α -tocopheryl acetate, retinyl acetate, copper gluconate, sodium selenite, cholecalciferol, manganese sulphate, D-biotin, calcium D-pantothenate, thiamin hydrochloride, chromium chloride, riboflavin, pyridoxine hydrochloride, pteroylmonoglutamic acid, potassium iodide, sodium fluoride, sodium molybdate, phytomenadione, cyanocobalamin.

* Docosahexanaeic acid (DHA)

** Eicosapentaenoic acid (EPA)



***MF6 is a unique, patented blend of six soluble and insoluble fibres (soy polysaccharide, cellulose, resistant starch, gum arabic, oligofructose and inulin) reflecting the proportions of the different fibre types in a healthy diet.

A food for special medical purposes; to be used under strict medical supervision.

For more information call the
Nutricia Clinical Care Line 1800 060 051

NC3449-Apr17

NUTRICIA
Advanced Medical Nutrition

Nutrini Energy Multi Fibre

Nutrition Information		Per 100ml	Per 500ml
Energy	kcal	150	750
	kJ	630	3150
Protein	g	4.1 (10.7%E)	20.5
Casein	g	2.5	12.5
Whey	g	1.6	8
Carbohydrate	g	18.5 (48.7%E)	92.5
Sugars	g	1.1	5.5
as Lactose	g	<0.025	<0.125
Fat	g	6.7 (39.6%E)	33.5
Saturates	g	0.8	4
Monounsaturates	g	3.9	19.5
Polyunsaturates	g	2	10
DHA + EPA	mg	53.1	265.1
EPA	mg	12.6	63
ω6 / ω3 ratio		3.8:1	3.8:1
Fibre	g	0.8 (1%)	4
Soluble:Insoluble		50:50	50:50
Water	ml	77	385

Minerals		Per 100ml	Per 500ml
Sodium	mg	90	450
	mmol	3.9	19.5
Potassium	mg	165	825
	mmol	4.2	21
Calcium	mg	90	450
Phosphorus	mg	75	375
Magnesium	mg	17	85
Chloride	mg	143	715
Ca:P ratio		1.2:1	1.2:1

Vitamins		Per 100ml	Per 500ml
Vitamin A	μg-RE	61	305
Vitamin D	μg	1.5	7.5
Vitamin E	mg-α-T.E.	1.9	9.5
Vitamin K	μg	6	30
Vitamin C	mg	15	75
Thiamin	mg	0.23	1.2
Riboflavin	mg	0.24	1.2
Niacin	mg NE	1.7	8.5
Vitamin B6	mg	0.18	0.9
Vitamin B12	μg	0.27	1.4
Folic Acid	μg	23	115
Pantothenic Acid	mg	0.5	2.5
Biotin	μg	6	30

Trace Elements		Per 100ml	Per 500ml
Iron	mg	1.5	7.5
Zinc	mg	1.5	7.5
Manganese	mg	0.23	1.15
Copper	μg	122	610
Iodine	μg	15	75
Molybdenum	μg	6	30
Selenium	μg	4.5	22.5
Chromium	μg	5.3	26.5
Fluoride	mg	0.11	0.55



Other		Per 100ml	Per 500ml
Carotenoids	mg	0.15	0.75
Choline	mg	30	150
Carnitine	mg	3	15
Taurine	mg	11	55
Osmolality	mOsmol/kgH ₂ O	405	405