

Infatrini

A nutritionally complete, high energy, ready-to-use feed for infants 0 – 18 months (or up to 9kg)

Features

- 1kcal/ml, 3.25g protein per 125ml bottle (10%E) shown to promote catch up growth¹
- Whey dominant formulation to maximise tolerance
- Contains a mixture of prebiotic fibres (GOS/FOS)* to support gut health
- Now with optimal 1:1 LCP[#] ratio² to support healthy eye and brain development
- Optimal osmolality for better tolerance (360 mOsmol/kg H₂O)
- Now with increased calcium & vitamin D to support bone health
- Now with increased nucleotide content (4.3mg/100ml)
- Convenient 125ml bottle that can be given orally by teat or used as a tube feed (compatible with Flocare[®] Universal Feeding Sets)

Indications

For the dietary management of:

- Infants 0 – 18 months (or up to 9kg) with disease related malnutrition and growth failure.

Important Notice

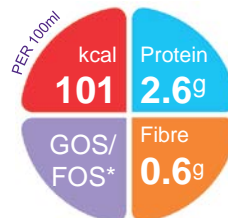
- Not suitable for patients with Galactosaemia
- Not for parenteral use
- Infatrini must be used under medical supervision, after full consideration of all feeding options, including breastfeeding.
- Always ensure you follow preparation instructions exactly as incorrect preparation can make your baby ill.

Storage

- Store in a cool, dry place

Ingredients

Infatrini: Demineralised water, skimmed cow's **milk**, maltodextrin, vegetable oils (rapeseed oil, sunflower oil, coconut oil (contains **soy** lecithin), medium chain triglycerides (coconut and palm kernel oil), corn oil, single cell oil), lactose (from cow's **milk**), dietary fibres (galacto-oligosaccharides (from cow's **milk** sugar), fructo-oligosaccharides), whey protein (from cow's **milk**), butter oil (from cow's **milk**), tri calcium di citrate, refined tuna **fish** oil, potassium citrate, acidity regulator (citric acid), emulsifier (mono- and diglycerides of fatty acids), tri calcium phosphate, sodium chloride, sodium L-ascorbate, inositol, calcium hydroxide, choline chloride, magnesium carbonate, potassium hydroxide, di potassium hydrogen phosphate, taurine, ferrous lactate, sodium hydroxide, DL- α -tocopheryl acetate, beta carotene, zinc sulphate, cytidine 5'-monophosphate, L-carnitine, adenosine 5'-monophosphate, retinyl acetate, uridine 5'-monophosphate disodium salt, inosine 5'-monophosphate disodium salt, calcium D-pantothenate, cholecalciferol, nicotinamide, guanosine 5'-monophosphate disodium salt, copper gluconate, D-biotin, thiamin hydrochloride, sodium selenite, potassium iodide, riboflavin, pyridoxine hydrochloride, pteroylmonoglutamic acid, phytomenadione, manganese sulphate, cyanocobalamin.



Directions for Use

- Usage to be determined by a healthcare professional.
- Wash your hands. Use clean or sterilised utensils.
- Can be used at room temperature or warmed by placing bottle in warm water (do not microwave)
- Shake well and always check temperature before use.
- Once opened, close the bottle and store in refrigerator immediately and use within 12 hours.
- Maximum 4 hour hanging time for tube feeding.
- Always discard unfinished feeds.

Ordering Information

- To order contact Nutricia Customer Care 1800 889 480

Infatrini	Code	Units per carton
125ml bottle	89363	24

1. Clarke SE et al. J Hum Nutr Diet 2007; 20(4): 329-339
2. Koletzko B et al. J Perinat Med 2008; 36: 5-14

*GOS/FOS: galacto-oligosaccharides (GOS) and fructo-oligosaccharides (FOS)
#LCP: Long Chain Polyunsaturated Fatty Acids

A food for special medical purposes; to be used under strict medical supervision.

For more information call the
Nutricia Clinical Care Line 1800 060 051



Infatrini

Nutrition Information		Per 100ml	Per 125ml bottle
Energy	kcal	101	126
	kJ	420	525
Protein	g	2.6 (10%E)	3.25 (10%E)
Casein	g	1	1.25
Whey	g	1.6	2
Carbohydrate	g	10.3 (41%E)	12.9 (41%E)
Sugars	g	5.7	7.13
as Lactose	g	5.2	6.5
Fat	g	5.4 (48%E)	6.75 (48%E)
Saturates	g	2.2	2.75
Monounsaturates	g	2.1	2.63
-of which MCT	g	0.6	0.75
Polyunsaturates	g	1.1	1.38
Linoleic acid	mg	799	999
α-Linolenic acid	mg	139	174
DHA	mg	17.6	22
EPA	mg	5.01	6.26
ω6 / ω3 ratio		5:1	5:1
Fibre^	g	0.6 (1%E)	0.75 (1%E)
Soluble:Insoluble	g	1:0	1:0
Water	ml	85	106
Minerals		Per 100ml	Per 125ml bottle
Sodium	mg	37	46
	mmol	1.6	2
Potassium	mg	95	119
	mmol	2.4	3
Calcium	mg	100	125
Phosphorus	mg	50	62.5
Magnesium	mg	9	11
Chloride	mg	62	77.5
Ca:P ratio		2:1	2:1

^Contains galacto-oligosaccharides and fructo-oligosaccharides at 0.8g/100ml

Vitamins		Per 100ml	Per 125ml bottle
Vitamin A	µg-RE	81	101
Vitamin D	µg	1.9	2.38
Vitamin E	mg-α-T.E.	2.1	2.63
Vitamin K	µg	6.7	8.38
Vitamin C	mg	14	17.5
Thiamin	mg	0.15	0.19
Riboflavin	mg	0.2	0.25
Niacin	mg NE	1.2	1.5
Vitamin B6	mg	0.11	0.14
Vitamin B12	µg	0.3	0.38
Folic Acid	µg	16	20
Pantothenic Acid	mg	0.8	1
Biotin	µg	4	5
Trace Elements		Per 100ml	Per 125ml bottle
Iron	mg	1.2	1.5
Zinc	mg	0.8	1
Manganese	µg	16	20
Copper	µg	65	81.25
Iodine	µg	18	22.5
Molybdenum	µg	<8	<10
Selenium	µg	2.2	2.75
Chromium	µg	<8	<10
Other		Per 100ml	Per 125ml bottle
β carotene	µg	35	43.75
Choline	mg	17	21.25
L-Carnitine	mg	2	2.5
Inositol	mg	25	31.25
Taurine	mg	7	8.75
Nucleotides	mg	4.3	5.38
Osmolality	mOsmol/kg H ₂ O	360	360